

Minifile System Ceiling empty profile

code LTM00.2000/01

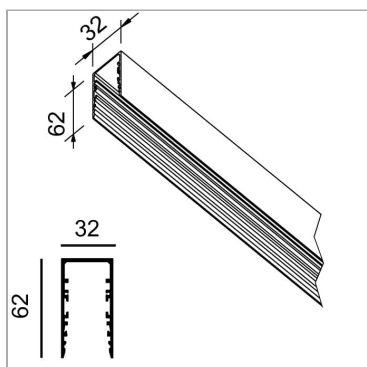


PRODUCT DESCRIPTION

Modular system for direct, diffused, accent or wallwasher, made of 62x32 mm painted or anodised extruded aluminium empty profiles, available in predefined lengths or cut to measure. Available in wall-mounted, ceiling-mounted, suspended, trimless recessed or recessed with super-slim 5 mm. width edge trim versions. To be integrated with linear LED sources, LED spotlights, complete with 50/60 Hz 230/240 V electronic power supply. To be completed with Light Proof system side end caps, opal white polycarbonate diffusing screen, quick mounting extruded aluminium shapers (for linear LEDs and spotlight LEDs) or closing profiles, available in predefined lengths or cut to measure, and mounting brackets or suspension cables. IP20 or IP40 protection degree depending on the selected lighting combinations.

PRODUCT SPECS

Installation method	system
Finishing	White
Dimension	L2000 mm



WEB PAGE



ASSEMBLY INSTRUCTIONS



OPTIONAL ACCESSORIES

Minifile System Couple of closure heads for ceiling/suspension profile with diffuser



code LTM049P/01

couple of heads for ceiling/suspension profile with diffuser

Technical Sheet



Linear joint couple



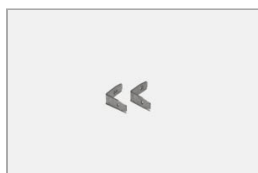
code LTM211

Modular system of 30X30 mm single and bi-emission extruded aluminium profiles, for recessed, ceiling and suspension installation, with LED linear sources and 230/240V electronic ballasts. Its dimensions make it suitable for installation on radiant ceilings by means of appropriate bracket. Painted finish. Diffuser screens in opal polycarbonate and side closing heads with Light Proof system. Degree of protection IP20/ IP40.

Technical Sheet



Angle connector couple



code LTM211.90

Trimless, fully-retracting flush recessed modular systems for housing system profiles and MINIFILE, FILE, FILE 2, FILE 2 COMPLEMENTI, LEVA and FARETÈN finished modules for creating cuts of continuous light or where light modules alternate to voids, in plaster-board false-ceiling or false-walls or in concrete or brick walls. Painted or anodised extruded aluminium body, with a predefined length or cut to size. To be completed with side end caps and finishing cover for the empty spaces in a retracted position to determine an effect of solids and voids. Can also be used with LED linear light sources, to be completed with opal white PC diffusing screen and remote power supplies, to create retracted grooves of light.

Technical Sheet



Minifile System Opal white polycarbonate diffuser



code LTM044.1000

Trimless, fully-retracting flush recessed modular systems for housing system profiles and MINIFILE, FILE, FILE 2, FILE 2 COMPLEMENTI, LEVA and FARETÈN finished modules for creating cuts of continuous light or where light modules alternate to voids, in plaster-board false-ceiling or false-walls or in concrete or brick walls. Painted or anodised extruded aluminium body, with a predefined length or cut to size. To be completed with side end caps and finishing cover for the empty spaces in a retracted position to determine an effect of solids and voids. Can also be used with LED linear light sources, to be completed with opal white PC diffusing screen and remote power supplies, to create retracted grooves of light.

Technical Sheet



code LTM044.2000



Trimless, fully-retracting flush recessed modular systems for housing system profiles and MINIFILE, FILE, FILE 2, FILE 2 COMPLEMENTI, LEVA and FARETÈN finished modules for creating cuts of continuous light or where light modules alternate to voids, in plaster-board false-ceiling or false-walls or in concrete or brick walls. Painted or anodised extruded aluminium body, with a predefined length or cut to size. To be completed with side end caps and finishing cover for the empty spaces in a retracted position to determine an effect of solids and voids. Can also be used with LED linear light sources, to be completed with opal white PC diffusing screen and remote power supplies, to create retracted grooves of light.

Technical Sheet



code LTM044.3000



Trimless, fully-retracting flush recessed modular systems for housing system profiles and MINIFILE, FILE, FILE 2, FILE 2 COMPLEMENTI, LEVA and FARETÈN finished modules for creating cuts of continuous light or where light modules alternate to voids, in plaster-board false-ceiling or false-walls or in concrete or brick walls. Painted or anodised extruded aluminium body, with a predefined length or cut to size. To be completed with side end caps and finishing cover for the empty spaces in a retracted position to determine an effect of solids and voids. Can also be used with LED linear light sources, to be completed with opal white PC diffusing screen and remote power supplies, to create retracted grooves of light.

Technical Sheet



code LTM044.misura



Trimless, fully-retracting flush recessed modular systems for housing system profiles and MINIFILE, FILE, FILE 2, FILE 2 COMPLEMENTI, LEVA and FARETÈN finished modules for creating cuts of continuous light or where light modules alternate to voids, in plaster-board false-ceiling or false-walls or in concrete or brick walls. Painted or anodised extruded aluminium body, with a predefined length or cut to size. To be completed with side end caps and finishing cover for the empty spaces in a retracted position to determine an effect of solids and voids. Can also be used with LED linear light sources, to be completed with opal white PC diffusing screen and remote power supplies, to create retracted grooves of light.

Technical Sheet



Minifile System Extruded aluminium closing cover

code FM6.1000/01



*Through this code you can order the profile in a non-standard linear length. Replace the word "measure" with the desired length in mm. To order a profile with one or both ends cut at a 45 ° angle, add to the measure the letter "D" (Right cut) or "S" (Left cut). Follow the instructions on p. 652. For profiles over 3 meters and maximum 6 meters the transport conditions are to be agreed.

Technical Sheet



code FM6.2000/01



*Through this code you can order the profile in a non-standard linear length. Replace the word "measure" with the desired length in mm. To order a profile with one or both ends cut at a 45 ° angle, add to the measure the letter "D" (Right cut) or "S" (Left cut). Follow the instructions on p. 652. For profiles over 3 meters and maximum 6 meters the transport conditions are to be agreed.

Technical Sheet



code FM6.3000/01



*Through this code you can order the profile in a non-standard linear length. Replace the word "measure" with the desired length in mm. To order a profile with one or both ends cut at a 45 ° angle, add to the measure the letter "D" (Right cut) or "S" (Left cut). Follow the instructions on p. 652. For profiles over 3 meters and maximum 6 meters the transport conditions are to be agreed.

Technical Sheet



code FM6.misura/01



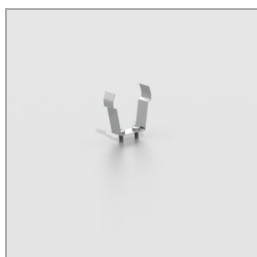
*Through this code you can order the profile in a non-standard linear length. Replace the word "measure" with the desired length in mm. To order a profile with one or both ends cut at a 45 ° angle, add to the measure the letter "D" (Right cut) or "S" (Left cut). Follow the instructions on p. 652. For profiles over 3 meters and maximum 6 meters the transport conditions are to be agreed.

Technical Sheet



Minifile system Spring for closing cover

code FM.MLC



Modular system for direct, diffused, accent or wallwasher, made of 62x32 mm painted or anodised extruded aluminium empty profiles, available in predefined lengths or cut to measure. Available in wall-mounted, ceiling-mounted, suspended, trimless recessed or recessed with super-slim 5 mm. width edge trim versions. To be integrated with linear LED sources, LED spotlights, complete with 50/60 Hz 230/240 V electronic power supply. To be completed with Light Proof system side end caps, opal white polycarbonate diffusing screen, quick mounting extruded aluminium shapers (for linear LEDs and spotlight LEDs) or closing profiles, available in predefined lengths or cut to measure, and mounting brackets or suspension cables. IP20 or IP40 protection degree depending on the selected lighting combinations.

Technical Sheet

